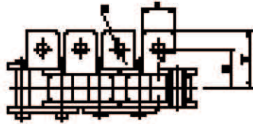


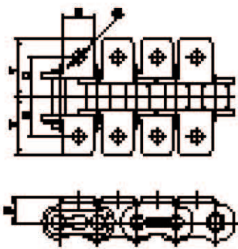
Standard Attachment Chain

표준형 어태치먼트 체인

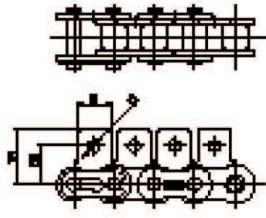
- * To locate more information about dimensions of Basic Chain, refer to the ANSI Standard Roller Chain
- * Available in <Environment Resistant Chain Series : Stainless Steel, Chrome-Plated and Nickel-Plated Chain Series>
- * 표준형 로울러체인에 어태치먼트를 부착한 체인으로 메인 체인의 세부 치수는 표준형 로울러 체인을 참조 하십시오.
- * 내식, 내열 환경에 적합한 도금형 / 스테인리스 재질 타입도 공급됩니다.



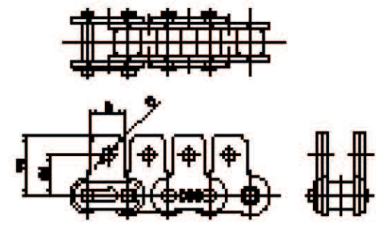
A-1



K-1



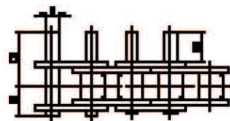
SA-1



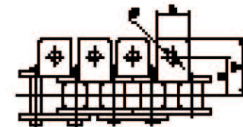
SK-1



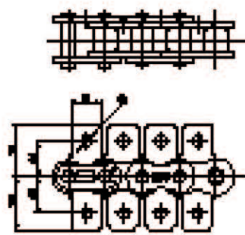
D-1



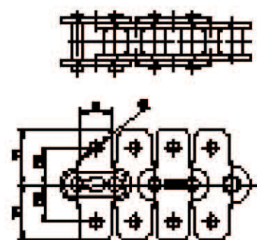
D-3



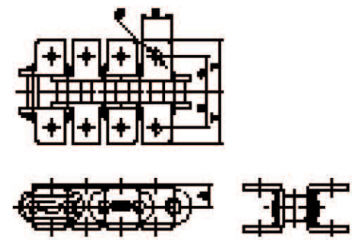
AA-1



SAA-1



SKK-1



KK-1

General & Extended Pin Type 일반형 & 핀 돌출형

unit : mm

| DONG BO Chain No. | Pitch | Inner width | Roller Dia | Common Dimensions | | Attachment Dimensions | | | | | | | Additional Weight per Attachment (kg/each) | | | Max. Allowable Load (kgf) | |
|-------------------|--------|-------------|------------|-------------------|------|-----------------------|------|------|------|-------|------|-------|--|--------|---------|---------------------------|-----------------|
| | P | MIN | MAX | B | O | C | Y | S | C1 | Y1 | L1 | L2 | A&SA | k&SK | D | Standard | Stainless Steel |
| DBC 25 | 6.35 | 3.18 | *3.30 | 5.6 | 3.4 | 7.15 | 10.7 | 4.75 | 7.95 | 11.65 | 6.0 | 9.2 | 0.0003 | 0.0006 | 0.00002 | 65 | 12 |
| DBC 35 | 9.525 | 4.78 | *5.08 | 7.9 | 3.4 | 9.5 | 14.3 | 6.35 | 9.5 | 14.55 | 9.5 | 14.6 | 0.0008 | 0.0016 | 0.0008 | 155 | 27 |
| DBC 41 | 12.70 | 6.38 | 7.77 | 9.5 | 3.6 | 11.9 | 16.4 | 7.15 | 12.7 | 16.65 | 9.5 | 15.45 | 0.0016 | 0.0032 | 0.0008 | 160 | - |
| DBC 40 | 12.70 | 7.95 | 7.92 | 9.5 | 3.6 | 12.7 | 17.8 | 8.0 | 12.7 | 17.40 | 9.5 | 16.8 | 0.002 | 0.004 | 0.001 | 270 | 45 |
| DBC 50 | 15.875 | 9.53 | 10.16 | 12.7 | 5.2 | 15.9 | 23.4 | 10.3 | 15.9 | 23.05 | 11.9 | 21.5 | 0.003 | 0.006 | 0.002 | 440 | 70 |
| DBC 60 | 19.05 | 12.70 | 11.91 | 15.9 | 5.2 | 19.05 | 28.2 | 11.9 | 18.3 | 26.85 | 14.3 | 25.85 | 0.007 | 0.014 | 0.003 | 640 | 105 |
| DBC 80 | 25.40 | 15.88 | 15.88 | 19.1 | 6.8 | 25.4 | 36.6 | 15.9 | 24.6 | 35.45 | 19.1 | 33.9 | 0.013 | 0.026 | 0.007 | 1,090 | 180 |
| DBC 100 | 31.75 | 19.05 | 19.05 | 25.4 | 8.7 | 31.75 | 44.9 | 19.8 | 31.8 | 44.00 | 23.8 | 41.85 | 0.026 | 0.052 | 0.012 | 1,740 | 260 |
| DBC 120 | 38.1 | 25.40 | 22.23 | 28.6 | 10.3 | 38.1 | 55.8 | 23.0 | 36.5 | 52.85 | 28.6 | 51.4 | 0.044 | 0.088 | 0.020 | 2,440 | 390 |
| DBC 140 | 44.45 | 25.40 | 25.40 | 34.9 | 11.9 | 44.5 | 63.1 | 28.6 | 44.5 | 63.50 | 33.3 | 57.5 | 0.071 | 0.142 | 0.030 | 3,300 | 470 |
| DBC 160 | 50.80 | 31.75 | 28.58 | 38.1 | 14.3 | 50.8 | 71.7 | 31.8 | 50.8 | 70.10 | 38.1 | 67.4 | 0.097 | 0.194 | 0.045 | 4,170 | 650 |
| DBC 200 | 63.50 | 38.10 | 39.68 | 47.6 | 16.3 | 63.5 | 90.0 | 42.9 | 63.5 | 84.50 | 47.6 | 83.4 | 0.186 | 0.372 | 0.106 | 7,000 | 1,050 |

Example of type indication 어태치먼트의 명칭과 의미

| Type of Attachment 표준형 어태치먼트 | Name of Attachment 명 칭 | Description 의 미 |
|---------------------------------|---|--|
| General-Type 일반형 | A | Bend Att.*, One Side, Horizontal type 한쪽방향 부착, 수평형 어태치먼트 |
| | A-1 | Bend Att., One Side, Horizontal type, One Hole 한쪽방향 부착, 수평형 어태치먼트, HOLE 1개 의미 |
| | K | Bend Att., Both Side, Horizontal type 양방향 부착, 수평형 어태치먼트 |
| | K-1 | Bend Att., Both Side, Horizontal type, One Hole 양방향 부착, 수평형 어태치먼트, HOLE 1개 |
| | SA | Bend Att., One Side, Vertical type 한쪽방향 부착, 수직형 어태치먼트 |
| | SA-1 | Bend Att., One Side, Vertical type, One Hole 한쪽방향 부착, 수직형 어태치먼트, HOLE 1개 |
| | SK | Bend Att., Both Side, Vertical type 양방향 부착, 수직형 어태치먼트, HOLE 1개 |
| SK-2 | Bend Att., Both Side, Vertical type, Two Hole 양방향 부착, 수직형 어태치먼트, HOLE 2개 | |
| Wide Type Wide형 | W | Wide Contour, Type Attachment Wide형 어태치먼트 |
| | WA | Wide Contour, One Side, Horizontal type Wide형, 한쪽방향 부착, 수평형 어태치먼트 |
| | WSA | Wide Contour, One Side, Vertical type Wide형, 한쪽방향, 수직형 어태치먼트 |
| | WK | Wide Contour, Both Side Wide형, 양방향부착 |
| | WSK | Wide Contour, Both Side, Vertical type Wide형, 양방향부착, 수직형 어태치먼트 |
| | WA-1 | Wide Contour, One Side, Horizontal type, One Hole Wide형, 한쪽방향, 수직형, HOLE 1개 |
| Extended Pin Type 돌출핀형 | D-1 | One Pin in Link extended 링크당 1개의 이송용 돌출핀 어태치먼트 |
| | D-3 | Both Pins in Link extended 링크당 2개의 이송용 돌출핀 어태치먼트 |

* Att* = Attachment

Example : DBC 80 SA-2/ 2L 범례

DBC80

Dong Bo chain Classification No.
동보체인 분류번호 80번체인

SA

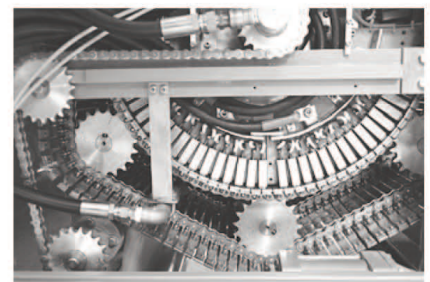
Bend Att.*, One Side, Vertical type
수직형 어태치먼트 플레이트가 한쪽방향에만 부착

-2

Indicate that attachment has two holes
어태치먼트의 HOLE 2개

/ 2L

Spacing of Attachment
어태치먼트 플레이트가 2링크마다 부착

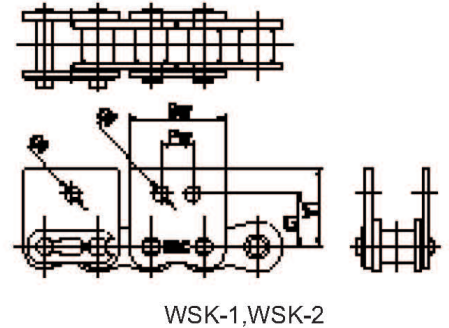
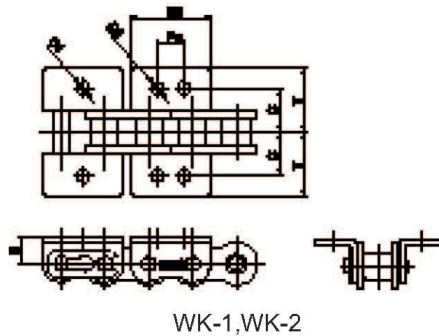
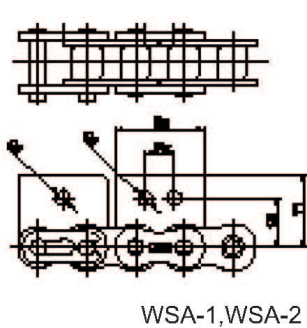
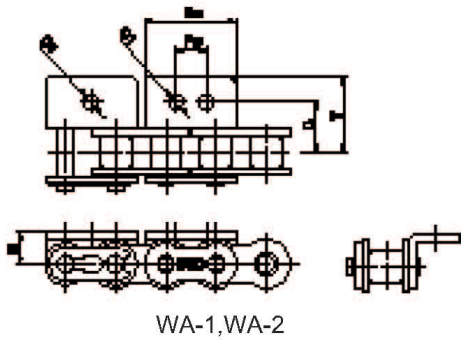


Standard Attachment Chain

표준형 어태치먼트 체인

- * To locate more information about dimensions of Basic Chain, refer to the ANSI Standard Roller Chain
- * Available in <Environment Resistant Chain Series : Stainless Steel, Chrome-Plated and Nickel-Plated Chain Series >

- * 표준형 로울러체인에 어태치먼트를 부착한 체인으로 메인 체인의 세부 치수는 표준형 로울러 체인을 참조 하십시오.
- * 내식, 내열 환경에 적합한 도금형/스테인리스 재질 타입도 공급됩니다.



Wide Type 와이드형

unit : mm

| DONG BO Chain No. | Pitch | Inner width | Roller Dia | Common Dimensions | | | Attachment Dimensions | | | | | Additional Weight per Attachment (kg/each) | | Max. Allowable Load (kgf) | | |
|-------------------|-------|-------------|------------|-------------------|------|------|-----------------------|-------|------|------|------|--|----------|---------------------------|-----------------|-----|
| | P | MIN | MAX | Bw | Pw | O1 | C | Y | S | C1 | Y1 | WA & WSA | WK & WSK | Standard | Stainless Steel | |
| DBC | 40 | 12.70 | 7.85 | 7.92 | 23.0 | 9.5 | 4.5 | 12.7 | 17.8 | 8.0 | 12.7 | 17.40 | 0.003 | 0.006 | 270 | 45 |
| | 50 | 15.875 | 9.40 | 10.16 | 28.8 | 11.9 | 5.5 | 15.9 | 23.4 | 10.3 | 15.9 | 23.05 | 0.007 | 0.014 | 440 | 70 |
| | 60 | 19.05 | 12.57 | 11.91 | 34.6 | 14.3 | 5.2 | 19.05 | 28.2 | 11.9 | 18.3 | 26.85 | 0.012 | 0.024 | 640 | 105 |
| | 80 | 25.40 | 15.75 | 15.88 | 46.1 | 19.1 | 6.8 | 25.4 | 36.6 | 15.9 | 24.6 | 35.45 | 0.026 | 0.052 | 1.090 | 180 |
| | 100 | 31.75 | 18.90 | 19.05 | 57.7 | 28.6 | 8.7 | 31.75 | 44.9 | 19.8 | 31.8 | 44.00 | 0.051 | 0.102 | 1.740 | 260 |