

## Top Roller Chains

### 톱 로울러 체인



\* The Top Roller chain places items on top of continuously running top roller of the chain and they can be freely conveyed regardless of direction or speed. You can choose steel or plastic resin as a roller's material according to applications.

- Advantages of Steel Roller Type: higher max. allowable Load and approval working temperature (-10°C~150°C)
- Advantages of Plastic Resin Roller Type : light weight, less noise

\* 톱 로울러체인은 연속적으로 구동하는 체인의 톱 로울러 위에 이송물을 적재하여, 체인의 이송방향 및 속도와는 무관하게 이송물을 반송할 수 있으며, 용도에 따라 로울러의 재질(스틸 또는 플라스틱)을 선택 할 수 있습니다.

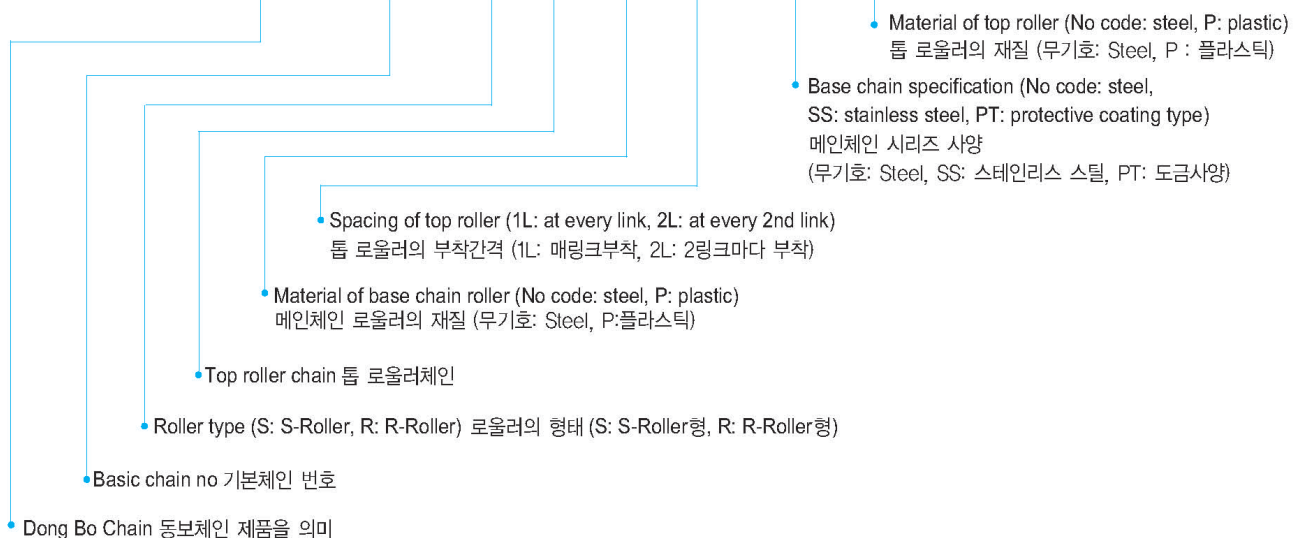
- 스틸 톱 로울러 선택 시: 허용하중 및 사용 허용온도 (-10°C ~150°C)가 상향됨
- 플라스틱 톱 로울러 선택 시: 경량, 저소음, 주행 저항의 감소로 체인에 대한 장력이 감소되는 장점이 있으나 사용 허용온도 (-10°C ~60°C)가 낮아지는 단점이 있습니다.

## Standardized Specification of Top Roller 표준화된 톱 로울러 체인의 종류

Type of Chain 구분	Roller Material of Basic Chain 기본체인의 로울러 재질	Top Roller Material 톱 로울러의 재질	Variations of Base Chain 선택가능한 기본체인 시리즈
Single Pitch Type 표준형 (싱글 피치타입)	Steel	Steel	Stainless Steel, Nickel-plated, Zinc galvanizing, Chromium plating series 스테인리스 체인, 니켈, 아연, 크롬 도금타입
Double Pitch Type 더블피치형	S-Roller S-로울러형	Steel & Plastic	
	R-Roller R-로울러형	Steel & Plastic	

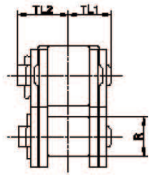
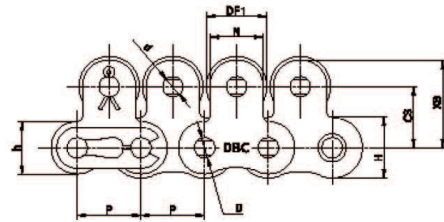
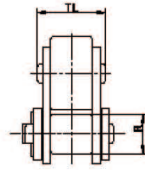
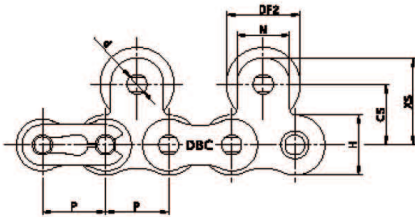
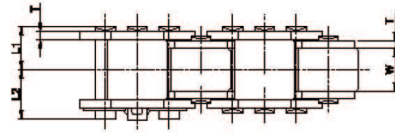
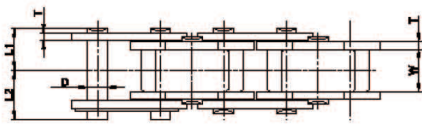
## Designation of Top Roller Chain 호칭 번호 부여의 예

### DBC 2040 S-TR-P-2L-SS-P



## Single Pitch Top Roller Chain 표준형 톱 로울러 체인

### Single strand 단열



2L Type (at every 2nd Link spacing)  
2L형 (2링크마다 부착형)

EL Type (at every link spacing)  
EL형 (매 링크마다 부착)

unit : mm

DONG BO Chain No.	Pitch P	Inner Width W	Roller Dia R	Plate		Pin			Approx Weight (kg/m)			
				T	H	D	L1	L2	Steel Roller Series		Plastic Top Roller Series	
									EL	2L	EL	2L
DBC 40 TR	12.70	7.95	7.94	1.5	12.0	3.97	8.25	9.95	1.83	1.41	0.92	0.85
DBC 50 TR	15.875	9.53	10.16	2.0	15.0	5.09	10.30	12.00	2.39	2.18	1.56	1.38
DBC 60 TR	19.05	12.70	11.91	2.4	18.1	5.96	12.85	14.75	3.60	3.18	2.30	2.03
DBC 80 TR	25.40	15.88	15.88	3.2	24.1	7.93	16.25	19.25	6.09	5.27	3.90	3.44
DBC 100 TR	31.75	19.05	19.05	4.0	30.1	9.54	19.75	22.85	9.30	8.85	6.06	5.41

unit : mm

DONG BO Chain No.	Attachment Dimensions								
	DF1	DF2	CS	N	XS	TL	TL1	TL2	d
DBC 40 TR	11.0	15.88	12.7	9.5	17.45	13.2	8.25	9.65	3.97
DBC 50 TR	15.0	19.05	15.9	12.7	22.25	16.2	10.30	11.90	5.09
DBC 60 TR	18.0	22.23	18.3	15.9	26.25	20.6	12.85	15.25	5.96
DBC 80 TR	24.0	28.58	24.6	19.1	34.15	25.7	16.25	19.25	7.93
DBC 100 TR	30.0	39.69	31.8	25.4	44.50	31.0	19.75	22.85	9.54

\* 'Spring clip type connecting link' is applied for DBC 40~60TR and 'cotter Type' for 80TR and larger  
 \* DBC 40~60TR체인에는 스프링클립형 연결구가 80번 이상에는 코터핀형 연결구가 표준으로 제공됩니다.

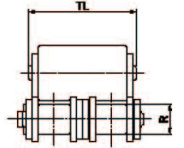
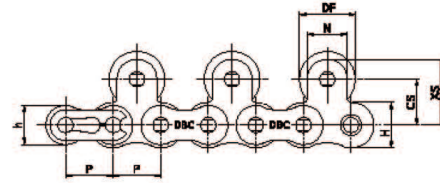
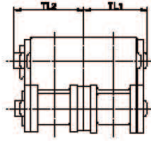
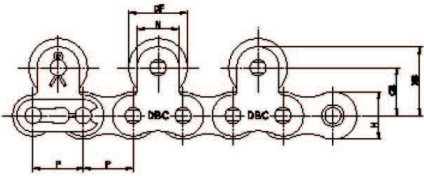
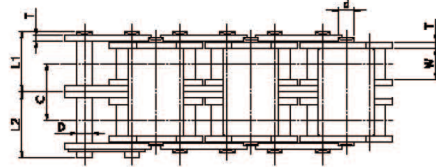
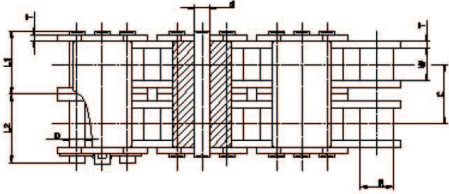


## Top Roller Chains

### 톱 로울러 체인

#### Single Pitch Top Roller Chains 표준형 톱 로울러 체인

##### Double strand 2열



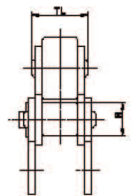
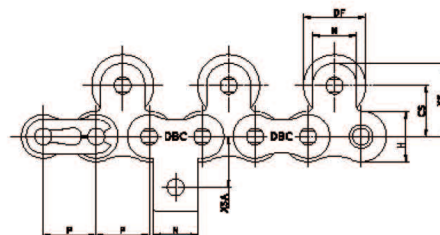
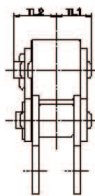
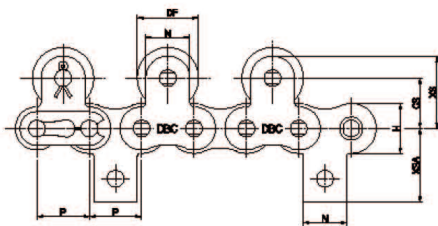
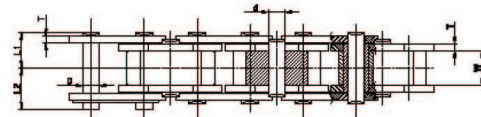
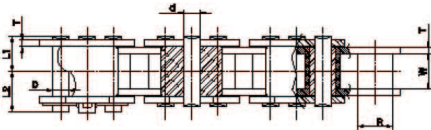
Outer Link Top Roller Installation  
외판링크 톱 로울러 부착시

Inner Link Top Roller Installation  
내판링크 톱 로울러 부착시

unit : mm

DONG BO Chain No.	Pitch P	Inner Width W	Roller Dia R	Transverse Pitch C	Plate		Pin			Attachment Dimensions							
					T	H	D	L1	L2	DF	CS	XS	N	TL	TL1	TL2	d
<b>DBC 40-2 TR</b>	12.70	7.95	7.94	14.4	1.5	12.0	3.97	15.45	17.15	15.88	12.7	17.45	9.5	28.3	15.45	16.95	3.97
<b>DBC 50-2 TR</b>	15.875	9.53	10.16	18.1	2.0	15.0	5.09	19.35	21.15	19.05	15.9	22.25	12.7	34.3	19.35	21.15	5.09
<b>DBC 60-2 TR</b>	19.05	12.70	11.91	22.8	2.4	18.1	5.96	24.25	26.25	22.23	18.3	26.25	15.9	43.4	24.25	26.75	5.96
<b>DBC 80-2 TR</b>	25.40	15.88	15.88	29.3	3.2	24.1	7.93	30.9	33.9	28.58	24.6	34.15	19.1	55.0	30.9	33.9	7.93
<b>DBC100-2 TR</b>	31.75	19.05	19.05	35.8	4.0	30.1	9.54	37.7	40.8	39.69	31.8	44.50	25.4	66.9	37.7	40.8	9.54

#### Derailing Prevention Type 이탈방지(離脫防止)형



Outer Link Top Roller Installation  
외판링크 톱 로울러 부착시

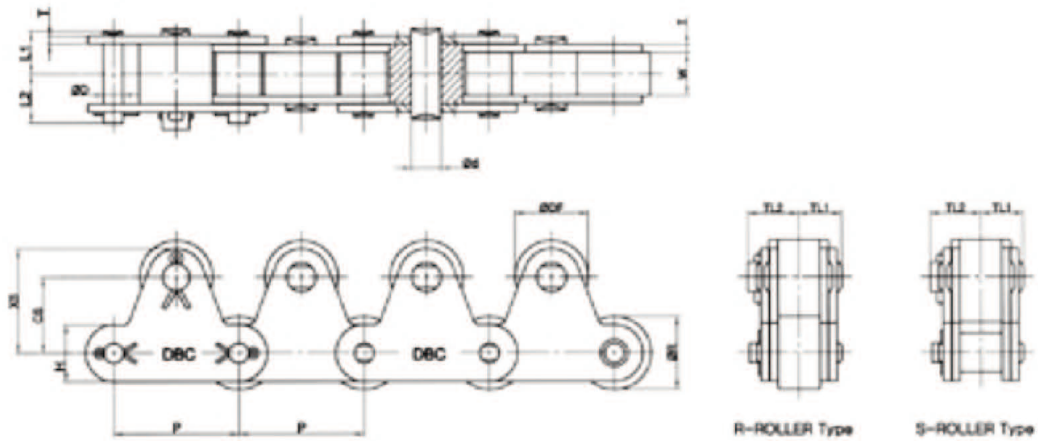
Inner Link Top Roller Installation  
내판링크 톱 로울러 부착시

unit : mm

DONG BO Chain No.	Pitch P	Inner Width W	Roller Dia R	Plate			Pin			Attachment Dimensions							
				T	H	D	L1	L2	DF	CS	N	XS	TL1	TL2	TL	d	XSA
<b>DBC 40 TR-TG</b>	12.70	7.95	7.94	1.5	12.0	3.97	8.25	9.95	15.88	12.7	9.5	17.45	8.25	9.65	13.2	3.97	17.4
<b>DBC 50 TR-TG</b>	15.875	9.53	10.16	2.0	15.0	5.09	10.3	12.0	19.05	15.9	12.7	22.25	10.3	11.9	16.2	5.09	23.05
<b>DBC 60 TR-TG</b>	19.05	12.70	11.91	2.4	18.1	5.96	12.85	14.75	22.23	18.3	15.9	26.25	12.85	15.25	20.6	5.96	26.85
<b>DBC 80 TR-TG</b>	25.40	15.88	15.88	3.2	24.1	7.93	16.25	19.25	28.58	24.6	19.1	34.15	16.25	19.25	25.7	7.93	35.45
<b>DBC100 TR-TG</b>	31.75	19.05	19.05	4.0	30.1	9.54	19.75	22.85	39.69	31.8	25.4	44.50	19.75	22.85	31.0	9.54	44.0

## Double Pitch Top Roller Chain 더블피치형 톱 로울러체인

### Single strand 단열



unit : mm

DONG BO Chain No.	Pitch P	Inner Width W	Roller Dia		Plate		Pin			Approx Weigth (kg/m)				
			S-Roller Type	R-Roller Type	T	H	D	L1	L1	Steel Top Roller Series		Plastic Top Roller Series		Plastic R Roller
										S-Roller Type	R-Roller Type	S-Roller Type	R-Roller Type	
DBC 2040 TR	25.40	7.95	7.94	15.88	1.5	12.0	3.97	8.25	9.95	1.40	1.7	0.9	1.3	0.9
DBC 2050 TR	31.75	9.53	10.16	19.05	2.0	15.0	5.09	10.3	12.0	2.10	2.5	1.5	1.90	1.4
DBC 2060 TR	38.10	12.70	11.91	22.23	3.2	18.1	5.96	14.55	16.55	3.7	4.4	2.8	3.5	2.8
DBC 2080 TR	50.80	15.88	15.88	28.58	4.0	24.1	7.93	18.3	20.9	5.7	6.8	4.3	5.40	4.5
DBC 2100 TR	63.50	19.05	19.05	39.69	4.8	30.1	9.54	21.8	24.5	9.2	11.4	6.5	8.8	6.6

unit : mm

DONG BO Chain No.	Attachment Dimensions					
	DF	CS	XS	TL1	TL2	d
DBC 2040 TR	15.88	15.0	21.0	8.45	10.05	3.97
DBC 2050 TR	19.05	19.0	26.5	10.5	12.9	5.95
DBC 2060 TR	22.23	23.0	31.6	14.75	17.75	7.94
DBC 2080 TR	28.58	29.0	40.5	18.5	21.3	11.1
DBC 2100 TR	39.69	35.4	49.7	22.1	27.2	11.1



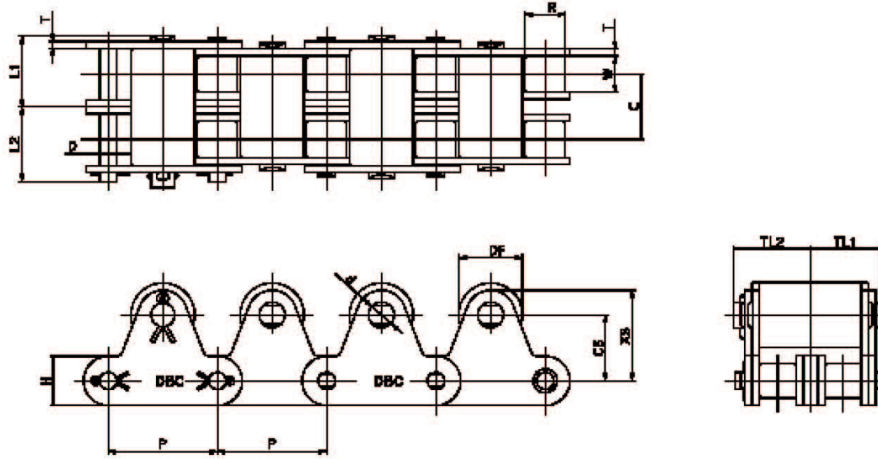


## Top Roller Chains

### 톱 로울러 체인

Top Roller Chain - Double Pitch Type 더블피치형 톱 로울러체인

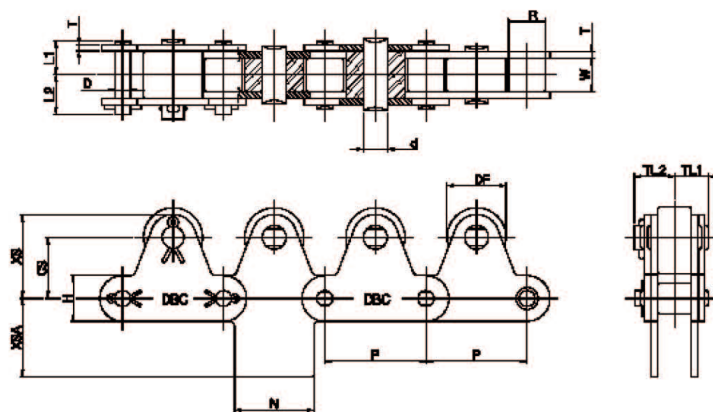
Double strand 2열



unit : mm

DONG BO Chain No.	Pitch P	Inner Width W	Transverse Pitch C	Roller Dia		Plate		Pin			Attachment Dimensions					
				S-Roller Type	R-Roller Type	T	H	D	L1	L2	DF	CS	XS	TL1	TL2	d
DBC 2040-2 TR	25.40	7.95	14.4	7.94	15.88	1.5	12.0	3.97	8.25	9.95	15.88	15.0	21.0	15.65	17.25	3.97
DBC 2050-2 TR	31.75	9.53	18.1	10.16	19.05	2.0	15.0	5.09	10.3	12.0	19.05	19.0	26.5	19.55	21.95	5.95
DBC 2060-2 TR	38.10	12.70	26.2	11.91	22.23	3.2	18.1	5.96	14.55	16.55	22.23	23.0	31.6	27.85	30.85	7.94
DBC 2080-2 TR	50.80	15.88	32.6	15.88	28.58	4.0	24.1	7.93	18.3	20.9	28.58	29.0	40.5	34.8	37.5	11.1
DBC 2100-2 TR	63.50	19.05	39.1	19.05	39.69	4.8	30.1	9.54	21.8	24.5	39.69	35.4	49.7	41.65	46.75	11.1

## Derailing Prevention Type 이탈방지(離脫防止)형



unit : mm

DONG BO Chain No.	Pitch P	Inner Width W	Roller Dia		Plate		Pin			Attachment Dimensions								
			S-Roller Type	R-Roller Type	T	H	D	L1	L2	DF	CS	XS	TL1	TL2	TL	d	N	XSA
DBC 2040-2 TR	25.40	7.95	7.94	15.88	1.5	12.0	3.97	8.25	9.95	15.88	15.0	21.0	8.45	10.05	13.6	3.97	19.1	12.7
DBC 2050-2 TR	31.75	9.53	10.16	19.05	2.0	15.0	5.09	10.3	12.0	19.05	19.0	26.5	10.5	12.9	16.6	5.95	23.8	15.9
DBC 2060-2 TR	38.10	12.70	11.91	22.23	3.2	18.1	5.96	14.55	16.55	22.23	23.0	31.6	14.75	17.75	22.6	7.94	28.6	19.1
DBC 2080-2 TR	50.80	15.88	15.88	28.58	4.0	24.1	7.93	18.3	20.9	28.58	29.0	40.5	18.15	21.25	27.8	11.1	38.1	25.4
DBC 2100-2 TR	63.50	19.05	19.05	39.69	4.8	30.1	9.54	21.8	24.5	39.69	35.4	49.7	22.1	27.2	34.1	11.1	47.6	31.8