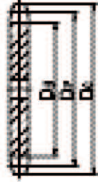


Sprocket for Standard Roller Chain

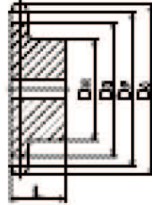
표준형 로울러 체인의 스프라켓

DBC 25

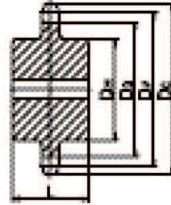
Type - A



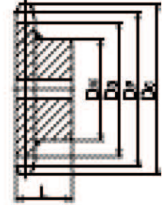
Type - B



Type - C



Type - BW



No hub extension (평판형) One-side hub extension (한쪽 보스형) Two-side hub extension (양쪽보스형) Hub Detachable Type (보스분리형)

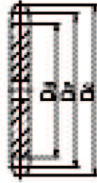
unit : mm

No. of Teeth N	Outside Dia D _o	Pitch Dia D _P	Bottom Dia D _B	Hub 최대보스		Material 재질	No. of Teeth N	Outside Dia D _o	Pitch Dia D _P	Bottom Dia D _B	Hub 최대보스		Material 재질
				Dia D _H	Length L						Dia D _H	Thickness L	
잇수	외경	피치원지름	이뿌리원지름	지름	길이		잇수	외경	피치원지름	이뿌리원지름	지름	길이	
10	24	20.55	17.25	14	15		50	105	101.13	97.83	50	20	
11	25	22.54	19.24	15	15		51	107	103.15	99.85			
12	28	24.53	21.23	15	15		52	109	105.17	101.87			
13	30	26.53	23.33	20	15		53	111	107.19	103.89			
14	32	28.54	25.24	20	15		54	113	109.21	105.91	50	20	
15	34	30.54	27.24	20	15		55	115	111.23	107.93			
16	36	32.55	29.25	25	15		56	117	113.25	109.95			
17	38	34.56	31.26	25	15		57	119	115.27	111.97			
18	40	36.57	33.27	25	15		58	121	117.29	113.99			
19	42	38.58	35.28	28	15		59	123	119.31	116.01			
20	44	40.59	37.29	28	15		60	125	121.33	118.03	50	20	
21	46	42.61	39.31	28	15		61	127	123.35	120.05			
22	48	44.62	41.32	30	15		62	129	125.37	122.07			
23	50	46.63	43.33	30	15		63	131	127.39	124.09			
24	52	48.65	45.35	30	15		64	133	129.41	126.11			
25	54	50.66	47.36	35	15		65	135	131.43	128.13	50	30	
26	56	52.68	49.38	35	15		66	137	133.45	130.15			
27	58	54.70	51.40	35	15	S45C	67	139	135.47	132.17			S45C
28	60	56.71	53.41	35	15		68	141	137.50	134.20			
29	62	58.73	55.43	35	15		69	143	139.52	136.22			
30	64	60.75	57.45	35	15		70	145	141.54	138.24	50	30	
31	66	62.77	59.47	40	20		71	147	143.56	140.26			
32	68	64.78	61.48	40	20		72	149	145.58	142.28			
33	70	66.80	63.50	40	20		73	151	147.60	144.30			
34	72	68.82	65.52	40	20		74	153	149.62	146.32			
35	74	70.84	67.54	40	20		75	155	151.64	148.34	50	30	
36	76	72.86	69.56	40	20		76	157	153.66	150.36			
37	78	74.88	71.58	40	20		77	159	155.68	152.38			
38	80	76.90	73.60	40	20		78	161	157.70	154.40			
39	82	78.91	75.61	40	20		79	163	159.72	156.42			
40	84	80.93	77.63	40	20		80	165	161.74	158.44	50	30	
41	87	82.95	79.65	50	20		81	167	163.76	160.46			
42	89	84.97	81.67	50	20		82	169	165.78	162.48			
43	91	86.99	83.69	50	20		83	171	167.81	164.51			
44	93	89.01	85.71	50	20		84	174	169.83	166.53			
45	95	91.03	87.73	50	20		85	176	171.85	168.55			
46	97	93.05	89.75	50	20		86	178	173.87	170.57			
47	99	95.07	91.77	50	20		87	180	175.89	172.59			
48	101	97.09	93.79	50	20		88	182	177.91	174.61			
49	103	99.41	95.81	50	20		90	186	181.95	178.65			

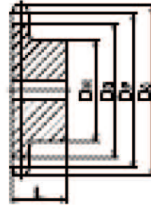
Note) 1. The indicated maximum axis diameter is for general cases. Please use general mechanical design knowledge when determining the value. You should also check the key surface pressure in the same manner. 2. The sprockets in colored portions of above table are already tooth line hardened.
 주) 1. 최대축경은 일반적인 경우를 나타내고 있기 때문에 결정시에는 일반기계설계의 상식으로 결정해 주십시오. 단 키의 면입에 관해서도 같은 식으로 체크 바랍니다.
 2. 위 표의 착색부분은 이미 치선경화(硬化)가 되어 있습니다.

DBC 35

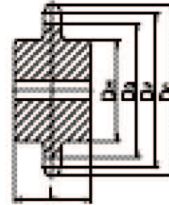
Type - A



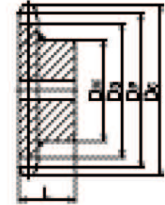
Type - B



Type - C



Type - BW



No hub extension
평판형

One-side hub extension
한쪽 보스형

Two-side hub extension
양쪽보스형

Hub Detachable Type
보스분리형

unit : mm

No. of Teeth N 잇수	Outside Dia D _o 외경	Pitch Dia D _p 피치원지름	Bottom Dia D _b 이뿌리원지름	Hub 최대보스		Material 재질	No. of Teeth N 잇수	Outside Dia D _o 외경	Pitch Dia D _p 피치원지름	Bottom Dia D _b 이뿌리원지름	Hub 최대보스		Material 재질
				Dia D _H 지름	Length L 길이						Dia D _H 지름	Thickness L 길이	
10	35	30.84	25.78	20	20	S45C	50	157	151.70	146.62	65	40	SS41
11	38	33.81	28.73	20	20		51	160	154.73	149.65			
12	41	36.80	31.72	27	20		52	163	157.75	152.67	65	40	
13	44	39.80	34.72	27	20		53	166	160.78	155.70			
14	47	42.81	37.73	32	20		54	169	163.81	158.73	65	40	
15	51	45.81	40.73	34	20		55	172	166.85	161.77	65	40	
16	54	48.82	43.74	37	20		56	175	169.88	164.80			
17	57	51.84	46.76	40	20		57	178	172.91	167.83			
18	60	54.85	49.77	43	20		58	181	175.94	170.86			
19	63	57.87	52.79	46	20		59	184	178.97	173.89			
20	66	60.89	55.81	49	20		60	187	182.00	176.92	65	40	
21	69	63.91	58.83	50	20		61	190	185.03	179.95			
22	72	66.93	61.85	56	20		62	194	188.06	182.98			
23	75	69.95	64.87	60	20		63	197	191.09	186.01			
24	78	72.97	67.89	60	25		64	200	194.12	189.04			
25	81	76.00	70.92	60	25		65	203	197.15	192.07	70	50	
26	84	79.02	73.94	60	25		66	206	200.18	195.10			
27	87	82.05	76.97	60	25		67	209	203.21	198.13			
28	90	85.07	79.99	60	25		68	212	206.24	201.16			
29	93	88.10	83.02	60	25		69	215	209.27	204.19			
30	96	91.12	86.04	60	25	70	218	212.30	207.22	70	50		
31	99	94.15	89.07	60	25	71	221	215.34	210.26				
32	102	97.18	92.10	60	25	72	224	218.37	213.29				
33	105	100.20	95.12	60	25	73	227	221.40	216.32				
34	109	103.23	98.15	60	25	74	230	224.43	219.35				
35	112	106.26	101.18	60	25	75	233	227.46	222.38	70	50		
36	115	109.29	104.21	55	30	76	236	230.49	225.41				
37	118	112.31	107.23	55	35	77	239	233.52	228.44				
38	121	115.34	110.26	55	35	78	242	236.55	231.47				
39	124	118.37	113.29	55	35	79	245	239.58	234.50				
40	127	121.40	116.32	55	35	80	248	242.61	237.53	70	50		
41	130	124.43	119.35	60	35	81	251	245.65	240.57				
42	133	127.46	122.38	60	35	82	254	248.68	243.60				
43	136	130.49	125.41	60	35	83	257	251.71	246.63				
44	139	133.52	128.44	60	35	84	260	254.74	249.66				
45	142	136.55	131.47	60	40	85	263	257.77	252.69				
46	145	139.58	134.50	60	40	86	266	260.80	255.72				
47	148	142.61	137.53	60	40	87	269	263.83	258.75				
48	151	145.64	140.56	65	40	88	272	266.86	261.78				
49	154	148.67	143.59	65	40	90	278	272.93	267.85				

Note) 1. The indicated maximum axis diameter is for general cases. Please use general mechanical design knowledge when determining the value. You should also check the key surface pressure in the same manner. 2. The sprockets in colored portions of above table are already tooth line hardened.

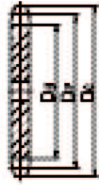
주) 1. 최대축경은 일반적인 경우를 나타내고 있기 때문에 결정시에는 일반기계설계의 상식으로 결정해 주십시오. 단 키이의 면압에 관해서도 같은 식으로 체크 바랍니다. 2. 위 표의 착색부분은 이미 치선경화(硬化)가 되어 있습니다.

Sprocket for Standard Roller Chain

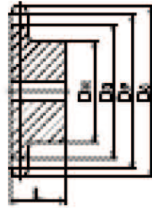
표준형 로울러 체인의 스프라켓

DBC 40

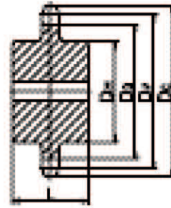
Type - A



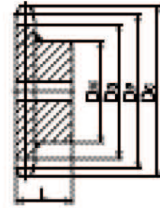
Type - B



Type - C



Type - BW



No hub extension
평판형

One-side hub extension
한쪽 보스형

Two-side hub extension
양쪽보스형

Hub Detachable Type
보스분리형

unit : mm

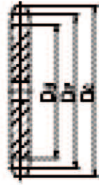
No. of Teeth N	Outside Dia D _o	Pitch Dia D _p	Bottom Dia D _b	Hub 최대보스		Material	No. of Teeth N	Outside Dia D _o	Pitch Dia D _p	Bottom Dia D _b	Hub 최대보스		Material
				Dia D _h	Length L						Dia D _h	Thickness L	
잇수	외경	피치원지름	이뿌리원지름	지름	길이	재질	잇수	외경	피치원지름	이뿌리원지름	지름	길이	재질
10	46	41.10	33.16	28	25	S45C	50	209	202.26	194.32	68	35	SS41
11	51	45.08	37.14	30	25		51	214	206.30	198.36	68	35	
12	55	49.07	41.13	34	25		52	218	210.34	202.40	68	35	
13	59	53.07	45.13	38	25		53	222	214.38	206.44	68	35	
14	63	57.07	49.13	42	25		54	226	218.42	210.48	68	35	
15	67	61.08	53.14	46	25		55	230	222.46	214.52	68	35	
16	71	65.10	57.16	50	25		56	234	226.50	218.56	68	35	
17	76	69.12	61.18	54	30		57	238	230.54	222.60	68	35	
18	80	73.14	65.20	54	30		58	242	234.58	226.64	68	35	
19	84	77.16	69.22	54	30		59	246	238.62	230.68	68	35	
20	88	81.18	73.24	56	40		60	250	242.66	234.72	68	35	
21	92	85.21	77.27	56	40		61	254	246.70	238.76	68	35	
22	96	89.24	81.30	56	40		62	258	250.74	242.80	68	35	
23	100	93.27	85.33	56	40		63	262	254.78	246.84	68	35	
24	104	97.30	89.36	56	40		64	266	258.83	250.89	68	35	
25	108	101.33	93.39	56	40		65	270	262.87	254.93	68	35	
26	112	105.36	97.42	56	40		66	274	266.91	258.97	68	35	
27	116	109.40	101.46	65	40		67	278	270.95	263.01	68	35	
28	120	113.43	105.49	65	40		68	282	274.99	267.05	68	35	
29	124	117.46	109.52	65	40		69	286	279.03	271.09	68	35	
30	128	121.50	113.56	65	40	70	290	283.07	275.13	73	40		
31	133	125.53	117.59	65	40	71	294	287.11	279.17	73	40		
32	137	129.57	121.63	65	40	72	299	291.16	283.22				
33	141	133.61	125.67	65	40	73	303	295.20	287.26	73	40		
34	145	137.64	129.70	65	40	74	307	299.24	291.30				
35	149	141.68	133.74	65	40	75	311	303.28	295.34	73	40		
36	153	145.72	137.78	68	35	76	315	307.32	299.38				
37	157	149.75	141.81	68	35	77	319	311.36	303.42	73	40		
38	161	153.79	145.85	68	35	78	323	315.40	307.46				
39	165	157.83	149.89	68	35	79	327	319.44	311.50	73	40		
40	169	161.87	153.93	68	35	80	331	323.49	313.55				
41	173	165.91	157.97	68	35	81	335	327.53	317.59	73	40		
42	177	169.95	162.01	68	35	82	339	331.57	321.63				
43	181	173.98	166.04	68	35	83	343	335.61	325.67	73	40		
44	185	178.02	170.08	68	35	84	347	339.65	329.71				
45	189	182.06	174.12	68	35	85	351	343.69	333.75	73	40		
46	193	186.10	178.16	68	35	86	355	347.73	337.79				
47	197	190.14	182.20	68	35	87	359	351.78	341.84	73	40		
48	201	194.18	186.24	68	35	88	363	355.82	345.88				
49	205	198.22	190.28	68	35	90	371	363.90	355.96				

Note) 1. The indicated maximum axis diameter is for general cases. Please use general mechanical design knowledge when determining the value. You should also check the key surface pressure in the same manner. 2. The sprockets in colored portions of above table are already tooth line hardened.

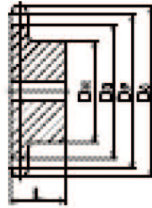
주) 1. 최대축경은 일반적인 경우를 나타내고 있기 때문에 결정시에는 일반기계설계의 상식으로 결정해 주십시오. 단 키의 면압에 관해서도 같은 식으로 체크 바랍니다. 2. 위 표의 착색부분은 이미 치선경화(硬化)가 되어 있습니다.

DBC 50

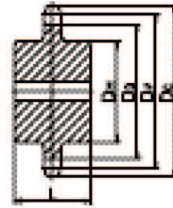
Type - A



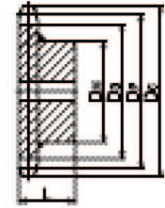
Type - B



Type - C



Type - BW



No hub extension
평판형

One-side hub extension
한쪽 보스형

Two-side hub extension
양쪽보스형

Hub Detachable Type
보스분리형

unit : mm

No. of Teeth N 잇수	Outside Dia D _o 외경	Pitch Dia D _p 피치원지름	Bottom Dia D _b 이뿌리원지름	Hub 최대보스		Material 재질	No. of Teeth N 잇수	Outside Dia D _o 외경	Pitch Dia D _p 피치원지름	Bottom Dia D _b 이뿌리원지름	Hub 최대보스		Material 재질	
				Dia D _H 지름	Length L 길이						Dia D _H 지름	Thickness L 길이		
10	58	51.38	41.22	35	25	S45C	50	262	252.83	242.67	73	40	SS41	
11	63	56.35	46.19	37	25		51	267	257.88	247.72	73	40		
12	68	61.34	51.18	43	25		52	272	262.92	252.76	73	40		
13	73	66.34	56.18	48	30		53	277	267.97	257.81	73	40		
14	79	71.34	61.18	53	30		54	282	273.02	262.86	73	40		
15	84	76.35	66.19	58	30		55	287	278.08	267.92	73	40		
16	89	81.37	71.21	63	30		56	292	283.13	272.97	73	40		
17	94	86.39	76.23	65	40		57	297	288.18	278.02	73	40		
18	99	91.42	81.26	65	40		58	302	293.23	283.07	73	40		
19	104	96.45	86.29	65	40		59	307	298.28	288.12	73	40		
20	109	101.48	91.32	70	45		60	312	303.33	293.17	73	40		
21	114	106.51	96.35	70	45		61	318	308.38	299.22				
22	119	111.55	101.39	70	45		62	323	313.43	303.27				
23	124	116.58	106.42	70	45		63	328	318.48	308.32				
24	129	121.62	111.46	70	45		64	333	323.53	313.37				
25	134	126.66	116.50	70	45		65	338	328.58	318.42	73	40		
26	139	131.70	121.54	70	45		66	343	333.64	323.48				
27	144	136.74	126.58	70	45		67	348	338.69	328.53				
28	149	141.79	131.63	70	45		68	353	343.74	333.58				
29	154	146.83	136.67	70	45		69	358	348.79	338.63				
30	160	151.87	141.71	70	45	70	363	353.84	343.68	93	45			
31	165	156.92	146.76	70	45	71	368	358.89	348.73					
32	170	161.96	151.80	70	45	72	373	363.94	353.78					
33	175	167.01	156.85	70	45	73	378	369.00	358.84					
34	180	172.05	161.89	70	45	74	383	374.05	363.89					
35	185	177.10	166.94	70	45	75	388	379.10	368.94	93	45			
36	191	182.14	171.98	73	40	76	393	384.15	373.99					
37	196	187.19	177.03	73	40	77	398	389.20	379.04					
38	201	192.24	182.08	73	40	78	403	394.25	384.09					
39	206	197.29	187.13	73	40	79	409	399.31	389.15					
40	211	202.33	192.17	73	40	80	414	404.36	394.20	93	45			
41	216	207.38	197.22	73	40	81	419	409.41	399.25					
42	221	212.43	202.27	73	40	82	424	414.46	404.30					
43	226	217.48	207.32	73	40	83	429	419.51	409.35					
44	231	222.53	212.37	73	40	84	434	424.57	414.41					
45	237	227.58	217.42	73	40	85	439	429.62	419.46	93	45			
46	242	232.63	222.47	73	40	86	444	434.67	424.51					
47	247	237.68	227.52	73	40	87	449	439.72	429.56					
48	252	242.73	232.57	73	40	88	454	444.77	434.61					
49	257	247.78	237.62	73	40	90	465	454.88	444.72	93	45			

Note) 1. The indicated maximum axis diameter is for general cases. Please use general mechanical design knowledge when determining the value. You should also check the key surface pressure in the same manner. 2. The sprockets in colored portions of above table are already tooth line hardened.

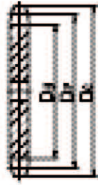
주) 1. 최대축경은 일반적인 경우를 나타내고 있기 때문에 결정시에는 일반기계설계의 상식으로 결정해 주십시오. 단 키의 면압에 관해서도 같은 식으로 체크 바랍니다. 2. 위 표의 착색부분은 이미 치선경화(硬化)가 되어 있습니다.

Sprocket for Standard Roller Chain

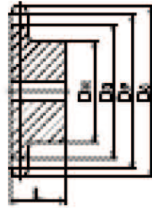
표준형 로울러 체인의 스프라켓

DBC 60

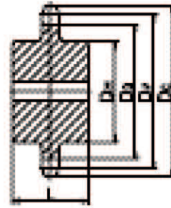
Type - A



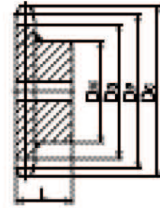
Type - B



Type - C



Type - BW



No hub extension (평판형) One-side hub extension (한쪽 보스형) Two-side hub extension (양쪽보스형) Hub Detachable Type (보스분리형)

unit : mm

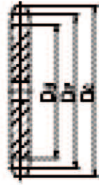
No. of Teeth N	Outside Dia D _o	Pitch Dia D _P	Bottom Dia D _B	Hub 최대보스		Material 재질	No. of Teeth N	Outside Dia D _o	Pitch Dia D _P	Bottom Dia D _B	Hub 최대보스		Material 재질
				Dia D _H	Length L						Dia D _H	Thickness L	
잇수	외경	피치원지름	이뿌리원지름	지름	길이		잇수	외경	피치원지름	이뿌리원지름	지름	길이	
10	70	61.65	49.74	39	40	S45C	50	314	303.39	291.48	83	50	SS41
11	76	67.62	55.71	45	40		51	320	309.45	297.54	83	50	
12	83	73.60	61.69	51	40		52	326	315.51	303.60	83	50	
13	89	79.60	67.69	56	40		53	332	321.57	309.66	83	50	
14	95	85.61	73.70	56	40		54	338	327.63	315.72	83	50	
15	101	91.62	79.71	56	40		55	345	333.69	321.78	83	50	
16	107	97.65	85.74	56	40		56	351	339.75	327.84	83	50	
17	113	103.67	91.76	70	40		57	357	345.81	333.90	83	50	
18	119	109.71	97.80	70	40		58	363	351.87	339.96	83	50	
19	126	115.74	103.83	70	40		59	369	357.93	346.02	83	50	
20	132	121.78	109.87	80	45		60	375	363.99	352.08	83	50	
21	138	127.82	115.91	80	45		61	381	370.06	358.15	83	50	
22	144	133.86	121.95	80	45		62	387	376.12	364.21			
23	150	139.90	127.99	80	45		63	393	382.18	370.27	83	50	
24	156	145.95	134.04	80	45		64	399	388.24	376.33			
25	162	151.99	140.08	80	45		65	405	394.30	382.39	108	70	
26	168	158.04	146.13	80	45		66	411	400.36	388.45			
27	174	164.09	152.18	80	45		67	417	406.42	394.51	108	70	
28	180	170.14	158.23	85	50		68	423	412.49	400.58			
29	187	176.20	164.29	85	50		69	430	418.55	406.64	108	70	
30	193	182.25	170.34	85	50		70	436	424.61	412.70			
31	199	188.30	176.39	85	50		71	442	430.67	418.76	108	70	
32	205	194.35	182.44	85	50		72	448	436.73	424.82			
33	211	200.41	188.50	85	50		73	454	442.79	430.88	108	70	
34	217	206.46	194.55	85	50		74	460	448.86	436.95			
35	223	212.52	200.61	85	50		75	466	454.92	443.01	108	70	
36	229	218.57	206.66	83	50		76	472	460.98	449.07			
37	235	224.63	212.72	83	50		77	478	467.04	455.13	108	70	
38	241	230.69	218.78	83	50		78	484	473.10	461.19			
39	247	236.74	224.83	83	50		79	490	479.17	467.26	108	70	
40	253	242.80	230.89	83	50	80	496	485.23	473.32				
41	260	248.86	236.95	83	50	81	502	491.29	479.38	108	70		
42	266	254.92	243.01	83	50	82	508	497.35	485.44				
43	272	260.98	249.07	83	50	83	514	503.42	491.51	108	70		
44	278	267.03	255.12	83	50	84	521	509.48	497.57				
45	284	273.09	261.18	83	50	85	527	515.54	503.63	108	70		
46	290	279.15	267.24	83	50	86	533	521.60	509.69				
47	296	285.21	273.30	83	50	87	539	527.67	515.76	108	70		
48	302	291.27	279.36	83	50	88	545	533.73	521.82				
49	308	297.33	285.42	83	50	90	557	545.85	533.94	108	70		

Note) 1. The indicated maximum axis diameter is for general cases. Please use general mechanical design knowledge when determining the value. You should also check the key surface pressure in the same manner. 2. The sprockets in colored portions of above table are already tooth line hardened.

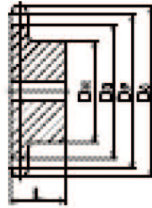
주) 1. 최대축경은 일반적인 경우를 나타내고 있기 때문에 결정시에는 일반기계설계의 상식으로 결정해 주십시오. 단 키의 면입에 관해서도 같은 식으로 체크 바랍니다.
2. 위 표의 착색부분은 이미 치선경화(硬化)가 되어 있습니다.

DBC 80

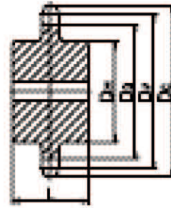
Type - A



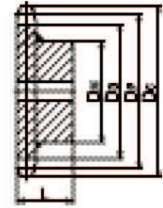
Type - B



Type - C



Type - BW



No hub extension (평판형) One-side hub extension (한쪽 보스형) Two-side hub extension (양쪽보스형) Hub Detachable Type (보스분리형)

unit : mm

No. of Teeth N 잇수	Outside Dia D _o 외경	Pitch Dia D _P 피치원지름	Bottom Dia D _B 이뿌리원지름	Hub 최대보스		Material 재질	No. of Teeth N 잇수	Outside Dia D _o 외경	Pitch Dia D _P 피치원지름	Bottom Dia D _B 이뿌리원지름	Hub 최대보스		Material 재질
				Dia D _H 지름	Length L 길이						Dia D _H 지름	Thickness L 길이	
10	93	82.19	66.31	55	50	S45C	50	419	404.52	388.64	108	60	SS41
11	102	90.16	74.28	60	50		51	427	412.60	396.72	108	60	
12	110	98.14	82.26	69	50		52	435	420.68	404.80			
13	118	106.14	90.26	77	50		53	443	428.76	412.88			
14	127	114.15	98.27	80	50		54	451	436.84	420.96			
15	135	122.17	106.29	80	50		55	459	444.92	429.04			
16	143	130.20	114.32	80	50		56	468	453.00	437.12			
17	151	138.23	122.35	90	50		57	476	461.08	445.20			
18	159	146.27	130.39	90	50		58	484	469.16	453.28			
19	167	154.32	138.44	90	50		59	492	477.25	461.37			
20	176	162.37	146.69	90	50		60	500	483.33	469.45	108	60	
21	184	170.42	154.54	90	50		61	508	493.41	477.53	108	60	
22	192	178.48	162.60	93	50		62	516	501.49	485.61			
23	200	186.54	170.66	93	50		63	524	509.97	493.69			
24	208	194.60	178.72	93	50		64	532	517.65	501.77			
25	216	202.66	186.78	93	50		65	540	525.73	509.85			
26	224	210.72	194.84	93	50		66	548	533.82	517.94			
27	233	218.79	202.91	93	50		67	557	541.90	526.02			
28	241	226.86	210.98	93	50		68	565	549.98	534.10			
29	249	234.93	219.05	93	50	69	573	558.06	542.18				
30	257	243.00	227.12	93	50	70	581	566.15	550.27	108			60
31	265	251.07	235.19	93	50	71	589	574.23	558.35	108	60		
32	273	259.14	243.26	93	50	72	597	582.31	566.43				
33	281	267.21	251.33	93	50	73	605	590.39	574.51				
34	289	275.29	259.41	93	50	74	613	598.47	582.59				
35	297	283.36	267.48	93	50	75	621	606.56	590.68				
36	306	291.43	275.55	93	50	76	629	614.64	598.76				
37	314	299.51	283.63	93	50	77	637	622.72	616.84				
38	322	307.58	291.70	93	50	78	646	630.81	614.93				
39	330	315.66	299.78	93	50	79	654	638.89	623.01				
40	338	323.74	307.86	108	60	80	662	646.97	631.09			108	60
41	346	331.81	315.93	108	60	81	670	655.06	639.18	108	60		
42	354	339.89	324.01	108	60	82	678	663.14	647.26				
43	362	347.97	332.09	108	60	83	686	671.22	655.34				
44	370	356.04	340.16	108	60	84	694	679.31	663.43				
45	378	364.12	348.24			85	702	687.39	671.51				
46	387	372.20	356.32	108	60	86	710	695.47	679.59				
47	395	380.28	364.40			87	718	703.55	687.67				
48	403	388.36	372.48	108	60	88	726	711.64	695.76				
49	411	396.44	380.56	108	60	90	743	727.80	711.92				

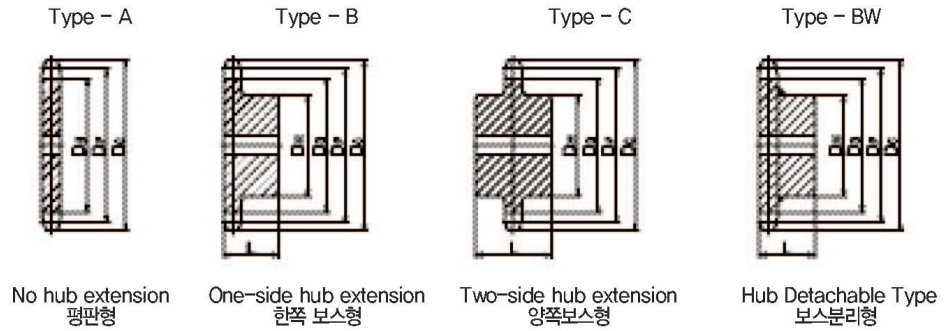
Note) 1. The indicated maximum axis diameter is for general cases. Please use general mechanical design knowledge when determining the value. You should also check the key surface pressure in the same manner. 2. The sprockets in colored portions of above table are already tooth line hardened.

주) 1. 최대축경은 일반적인 경우를 나타내고 있기 때문에 결정시에는 일반기계설계의 상식으로 결정해 주십시오. 단 키의 면압에 관해서도 같은 식으로 체크 바랍니다.
2. 위 표의 착색부분은 이미 치선경화(硬化)가 되어 있습니다.

Sprocket for Standard Roller Chain

표준형 로울러 체인의 스프라켓

DBC 100



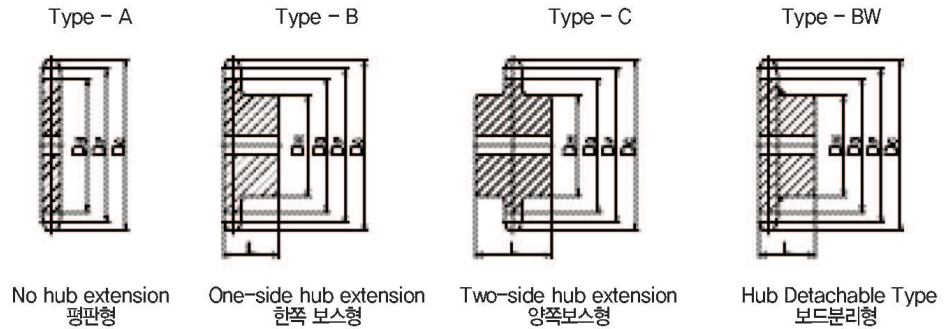
unit : mm

No. of Teeth N	Outside Dia D _o	Pitch Dia D _p	Bottom Dia D _b	Hub 최대보스		Material 재질	No. of Teeth N	Outside Dia D _o	Pitch Dia D _p	Bottom Dia D _b	Hub 최대보스		Material 재질
				Dia D _h	Length L						Dia D _h	Thickness L	
잇수	외경	피치원지름	이뿌리원지름	지름	길이		잇수	외경	피치원지름	이뿌리원지름	지름	길이	
10	116	102.74	83.69	65	70	S45C	50	524	505.65	486.60	117	70	
11	127	112.70	93.65	76	70		51	534	515.75	496.70			
12	138	122.67	103.62	86	70		52	544	525.85	506.80			
13	148	132.67	113.62	96	70		53	554	535.95	516.90			
14	158	142.68	123.63	100	70		54	564	546.05	527.00			
15	168	152.71	133.66	100	70		55	574	556.15	537.10			
16	179	162.74	143.69	100	70		56	584	566.25	547.20			
17	189	172.79	153.74	105	80		57	595	579.35	557.30			
18	199	182.84	163.79	105	80		58	605	586.45	567.40			
19	209	192.90	173.85	105	80		59	615	596.56	577.51			
20	220	202.96	183.91	105	80	60	625	606.66	587.61	117	70		
21	230	213.03	193.98	105	80	61	635	616.76	597.71				
22	240	223.10	204.05	108	60	62	645	626.86	607.81				
23	250	233.17	214.12	108	60	63	655	636.96	617.91				
24	260	243.25	224.20	108	60	64	665	647.06	628.01				
25	270	253.32	234.27	108	60	65	675	657.17	638.12				
26	281	263.40	244.35	108	60	66	686	667.27	648.22				
27	291	273.49	254.44	108	60	67	696	677.37	658.32				
28	301	283.57	264.52	108	60	68	706	687.48	668.43				
29	311	293.66	274.61	108	60	69	716	697.58	678.53				
30	321	303.75	284.70	108	60	70	726	707.68	688.63	117	70	SS41	
31	331	313.83	294.78	117	70	71	726	717.78	698.73				
32	341	323.92	304.87	117	70	72	746	727.89	708.84				
33	352	334.01	314.96	117	70	73	756	737.99	718.94				
34	362	344.11	325.06	117	70	74	766	748.09	729.04				
35	372	354.20	335.15	117	70	75	777	758.20	739.15				
36	382	364.29	345.24	117	70	76	787	768.30	749.25				
37	392	374.38	355.33	117	70	77	797	778.41	759.36				
38	402	384.48	365.43	117	70	78	807	788.51	769.46				
39	412	394.57	375.52	117	70	79	817	798.61	779.56				
40	422	404.67	385.62	117	70	80	827	808.71	789.66				
41	433	414.77	395.72	117	70	81	837	818.82	799.77				
42	443	424.86	405.81	117	70	82	847	828.92	809.87				
43	453	434.96	415.91	117	70	83	857	839.03	819.98				
44	463	445.06	426.01	117	70	84	868	849.13	830.08				
45	473	455.16	436.11	117	70	85	878	859.23	840.18	117	70		
46	483	465.25	446.20	117	70	86	888	869.34	850.29				
47	493	475.35	456.30	117	70	87	898	879.44	860.39				
48	503	485.45	466.40	117	70	88	908	889.55	870.50				
49	514	495.55	476.50	117	70	90	928	899.65	890.70				

Note) 1. The indicated maximum axis diameter is for general cases. Please use general mechanical design knowledge when determining the value. You should also check the key surface pressure in the same manner. 2. The sprockets in colored portions of above table are already tooth line hardened.

주) 1. 최대축경은 일반적인 경우를 나타내고 있기 때문에 결정시에는 일반기계설계의 상식으로 결정해 주십시오. 단 키의 면압에 관해서도 같은 식으로 체크 바랍니다. 2. 위 표의 착색부분은 이미 치선경화(硬化)가 되어 있습니다.

DBC 120



unit : mm

No. of Teeth N	Outside Dia D _o	Pitch Dia D _P	Bottom Dia D _B	Hub 최대보스		Material 재질	No. of Teeth N	Outside Dia D _o	Pitch Dia D _P	Bottom Dia D _B	Hub 최대보스		Material 재질
				Dia D _H 지름	Length L 길이						Dia D _H 지름	Thickness L 길이	
10	140	123.29	101.06	80	70	S45C	50	628	606.78	584.55	137	80	SS41
11	153	135.24	113.01	90	70		51	641	618.90	596.67	137	80	
12	165	147.21	124.98	100	70		52	653	631.02	608.79			
13	177	159.20	136.97	105	70		53	665	643.14	620.91			
14	190	171.22	148.99	105	70		54	677	655.26	633.03			
15	202	183.25	161.02	105	70		55	689	667.38	645.15			
16	214	195.29	173.06	115	80		56	701	679.50	657.27			
17	227	207.35	185.12	115	80		57	713	691.63	669.40			
18	239	219.41	197.18	120	80		58	726	703.75	681.52			
19	251	231.48	209.25	120	80		59	738	715.87	693.64			
20	263	243.55	221.32	120	80		60	750	727.99	705.76			
21	276	255.63	233.40	120	80		61	762	740.11	717.88			
22	288	267.72	245.49	117	70		62	774	752.23	730.00			
23	300	279.80	257.57	117	70		63	786	764.35	742.12			
24	312	291.90	269.67	117	70		64	798	776.48	754.25	137	80	
25	324	303.99	281.76	117	70		65	811	788.60	766.37	137	80	
26	337	316.09	293.86	117	70		66	823	800.72	778.49			
27	349	328.19	305.96	117	70		67	835	812.85	790.62			
28	361	340.29	318.06	117	70		68	847	824.97	802.74			
29	373	352.39	330.16	117	70		69	859	837.10	814.87	137	80	
30	385	364.50	342.27	127	75		70	871	849.22	826.99	137	80	
31	398	376.60	354.37	127	75	SS41	71	883	861.34	839.11			
32	410	388.71	366.48				72	896	873.47	851.24			
33	422	400.82	378.59	73	908		885.59	863.36					
34	434	412.93	390.70	74	920		897.71	875.48					
35	446	425.04	402.81	127	75		75	932	909.84	887.61			
36	458	437.15	414.92	127	75		76	944	921.96	899.73			
37	470	449.26	427.03	127	75		77	956	934.09	911.86			
38	483	461.38	439.15				78	968	946.21	923.98			
39	495	473.49	451.26				79	980	958.33	936.10			
40	507	485.60	463.37	137	80		80	993	970.46	948.23			
41	519	497.72	475.49	137	80	81	1005	982.58	960.35				
42	531	509.84	487.61			82	1017	994.71	972.48				
43	543	521.95	499.72	137	80	83	1029	1006.83	984.60				
44	556	534.07	511.84			84	1034	1018.96	996.73				
45	568	546.19	523.96			85	1053	1031.08	1008.85				
46	580	558.30	536.07	137	80	86	1065	1043.20	1020.97				
47	592	570.42	548.19			87	1078	1055.33	1033.10				
48	604	582.54	560.31	137	80	88	1090	1067.46	1045.23				
49	616	594.66	572.43	137	80	89	1102	1079.58	1057.35				
						90	1114	1091.71	1069.48				

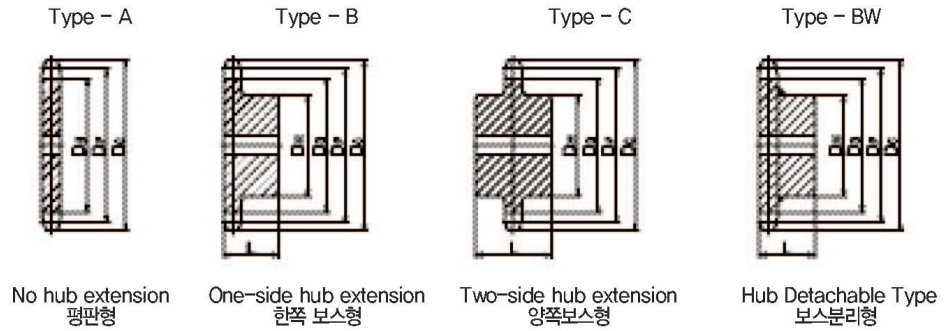
Note) 1. The indicated maximum axis diameter is for general cases. Please use general mechanical design knowledge when determining the value. You should also check the key surface pressure in the same manner. 2. The sprockets in colored portions of above table are already tooth line hardened.

주) 1. 최대축경은 일반적인 경우를 나타내고 있기 때문에 결정시에는 일반기계설계의 상식으로 결정해 주십시오. 단 키의 면압에 관해서도 같은 식으로 체크 바랍니다. 2. 위 표의 착색부분은 이미 치선경화(硬化)가 되어 있습니다.

Sprocket for Standard Roller Chain

표준형 로울러 체인의 스프라켓

DBC 140

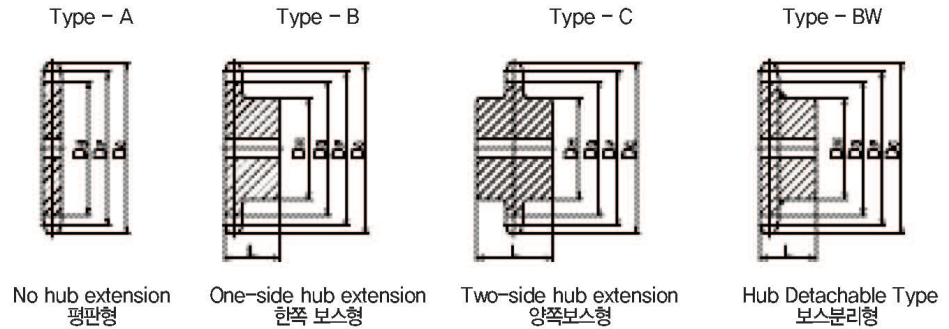


unit : mm

No. of Teeth N	Outside Dia D _o	Pitch Dia D _p	Bottom Dia D _b	Hub 최대보스		Material 재질	No. of Teeth N	Outside Dia D _o	Pitch Dia D _p	Bottom Dia D _b	Hub 최대보스		Material 재질		
				Dia D _h	Length L						Dia D _h	Thickness L			
잇수	외경	피치원지름	이뿌리원지름	지름	길이		잇수	외경	피치원지름	이뿌리원지름	지름	길이			
10	163	143.84	118.44	100	70	S45C	50	733	707.91	682.51	190	140			
11	178	157.78	132.38	100	70		51	747	722.05	696.65					
12	193	171.74	146.34	105	70		52	762	736.19	710.79					
13	207	185.74	160.34	105	70		53	776	750.33	724.93					
14	221	199.76	174.36	115	80		54	790	764.47	739.07					
15	236	213.79	188.39	115	80		55	804	778.61	753.21					
16	250	227.84	202.44	120	80		56	818	792.75	767.35					
17	264	241.91	216.51	120	80		57	832	806.90	781.50					
18	279	255.98	230.58	120	80		58	847	821.04	795.64					
19	293	270.06	244.66	130	85		59	861	835.18	809.78					
20	307	284.15	258.75	130	85		60	875	849.32	823.92					
21	322	298.24	272.84	130	85		61	889	863.46	838.06					
22	336	312.34	286.94	140	100		62	903	877.61	852.21					
23	350	326.44	301.04	140	100		63	917	891.75	866.35					
24	364	340.54	315.14	140	100		64	931	905.89	880.49					
25	379	354.65	329.25	150	110		65	946	920.03	894.63					
26	393	368.77	343.37	150	110		66	960	934.18	908.78					
27	407	382.88	357.48	150	110		67	974	948.32	922.92					
28	421	397.00	371.60	150	110		68	988	962.47	937.07					
29	435	411.12	385.72	150	110		SS41	69	1002	976.61	951.21	190		140	SS41
30	450	425.24	399.84			150		110	70	1016	990.75		965.35		
31	464	439.37	413.97			150		110	71	1031	1004.90		979.50		
32	478	453.49	428.09			150		110	72	1045	1019.04		993.64		
33	492	467.62	442.22			150		110	73	1059	1033.09		1007.79		
34	506	481.75	456.35			150		110	74	1073	1047.33		1021.93		
35	521	495.88	470.48			150		110	75	1087	1061.47		1036.07		
36	535	510.01	484.61			150		110	76	1101	1075.62		1050.22		
37	549	524.14	498.74			150		110	77	1116	1089.77		1064.37		
38	563	538.27	512.87			150		110	78	1130	1103.91		1078.51		
39	577	552.40	527.00	150	110	79	1144	1118.06	1092.66						
40	591	566.54	541.14	165	120	SS41	80	1158	1132.20	1106.80	190	140	SS41		
41	606	580.67	555.27				165	120	81	1172				1146.35	1120.95
42	620	594.81	569.41				165	120	82	1186				1160.49	1135.09
43	634	608.94	583.54				165	120	83	1200				1174.64	1149.24
44	648	623.08	597.68				165	120	84	1215				1188.78	1163.38
45	662	637.22	611.82				165	120	85	1229				1202.93	1177.53
46	676	651.35	625.95				165	120	86	1243				1217.07	1191.67
47	691	665.49	640.09				165	120	87	1257				1231.22	1205.82
48	705	679.63	654.23				165	120	88	1271				1245.36	1219.96
49	719	693.77	668.37				165	120	89	1285				1259.50	1234.10
							90	1300	1273.66	1248.26					

Note) 1. The indicated maximum axis diameter is for general cases. Please use general mechanical design knowledge when determining the value. You should also check the key surface pressure in the same manner. 2. The sprockets in colored portions of above table are already tooth line hardened.
 주) 1. 최대축경은 일반적인 경우를 나타내고 있기 때문에 결정시에는 일반기계설계의 상식으로 결정해 주십시오. 단 키의 면압에 관해서도 같은 식으로 체크 바랍니다.
 2. 위 표의 착색부분은 이미 치선경화(硬化)가 되어 있습니다.

DBC 160



unit : mm

No. of Teeth N	Outside Dia D _o	Pitch Dia D _P	Bottom Dia D _B	Hub 최대보스		Material	No. of Teeth N	Outside Dia D _o	Pitch Dia D _P	Bottom Dia D _B	Hub 최대보스		Material
				Dia D _H	Length L						Dia D _H	Thickness L	
잇수	외경	피치원지름	이뿌리원지름	지름	길이	재질	잇수	외경	피치원지름	이뿌리원지름	지름	길이	재질
10	186	164.39	135.81	100	70	SS41	50	838	809.04	780.46			
11	204	180.31	151.73	120	80		51	854	825.20	796.20			
12	220	196.28	167.70	120	80		52	870	841.36	812.78			
13	237	212.27	183.69	130	90		53	887	857.52	828.94			
14	253	228.30	199.72	130	90		54	903	873.68	845.10			
15	269	244.33	215.75	130	90		55	919	889.84	861.26			
16	286	260.39	231.81	130	90		56	935	906.00	877.42			
17	302	276.46	247.88	140	100		57	951	922.17	893.59			
18	319	292.55	263.97	140	100		58	967	938.33	909.75			
19	335	308.64	280.06	140	100		59	984	954.49	925.91			
20	351	324.74	296.16	140	100		60	1000	970.65	942.07			
21	368	340.84	312.26	140	100		61	1016	986.82	958.24			
22	384	356.96	328.38				62	1032	1002.98	974.40			
23	400	373.07	344.49				63	1048	1019.14	990.56			
24	416	389.19	360.61				64	1065	1035.30	1006.72			
25	433	405.32	376.74				65	1081	1051.47	1022.89			
26	449	421.45	392.87				66	1097	1067.63	1039.05			
27	465	437.58	409.00				67	1113	1083.80	1055.22			
28	481	453.72	425.14				68	1129	1099.96	1071.38			
29	498	469.85	441.27				69	1145	1116.13	1087.55			
30	514	485.99	457.41				70	1162	1132.29	1103.71			
31	530	502.13	473.55				71	1178	1148.46	1119.88			
32	546	518.28	489.70				72	1194	1164.62	1136.04			
33	562	534.42	505.84				73	1210	1180.79	1152.21			
34	579	550.57	521.99				74	1226	1196.95	1168.37			
35	595	566.71	538.13				75	1243	1213.11	1184.53			
36	611	582.86	554.28				76	1259	1229.28	1200.70			
37	627	599.01	570.43				77	1275	1245.45	1216.87			
38	644	615.17	586.59				78	1291	1261.61	1233.03			
39	660	631.32	602.74				79	1037	1277.78	1249.20			
40	676	647.47	618.89				80	1323	1293.94	1265.36			
41	692	663.63	635.05				81	1340	1310.11	1281.53			
42	708	679.78	651.20				82	1356	1326.28	1297.70			
43	725	695.93	667.35				83	1372	1342.45	1313.87			
44	741	712.09	683.51				84	1388	1358.61	1330.03			
45	757	728.25	699.67				85	1404	1374.78	1346.20			
46	773	744.40	715.82				86	1420	1390.94	1362.36			
47	789	760.56	731.98				87	1437	1407.11	1378.53			
48	806	776.72	748.14				88	1453	1423.27	1394.69			
49	822	792.88	764.30				90	1485	1455.61	1427.03			

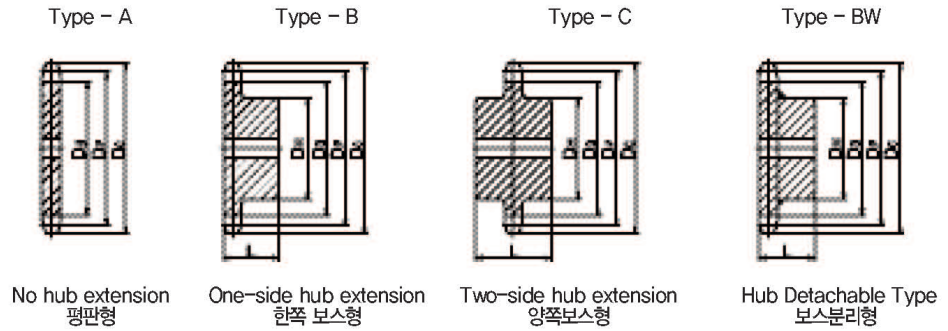
Note) 1. The indicated maximum axis diameter is for general cases. Please use general mechanical design knowledge when determining the value. You should also check the key surface pressure in the same manner. 2. The sprockets in colored portions of above table are already tooth line hardened.

주) 1. 최대축경은 일반적인 경우를 나타내고 있기 때문에 결정시에는 일반기계설계의 상식으로 결정해 주십시오. 단 키의 면압에 관해서도 같은 식으로 체크 바랍니다. 2. 위 표의 착색부분은 이미 치선경화(硬化)가 되어 있습니다.

Sprocket for Standard Roller Chain

표준형 로울러 체인의 스프라켓

DBC 200



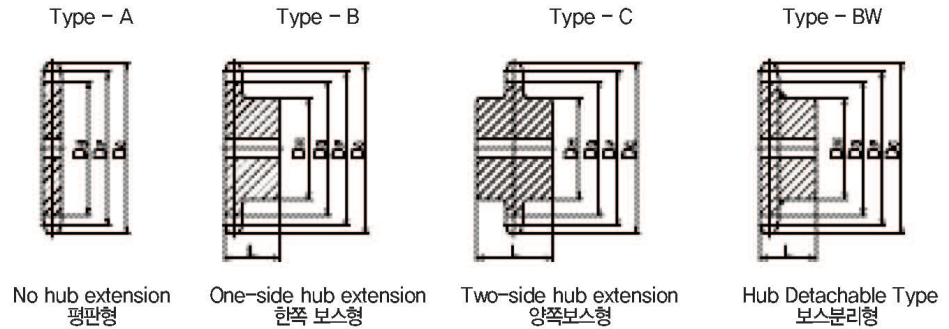
unit : mm

No. of Teeth N	Outside Dia D _o	Pitch Dia D _P	Bottom Dia D _B	Hub Dia D _H	Material 재질	No. of Teeth N	Outside Dia D _o	Pitch Dia D _P	Bottom Dia D _B	Hub Dia D _H	Material 재질
잇수	외경	피치원지름	이뿌리원지름	최대보스지름		잇수	외경	피치원지름	이뿌리원지름	최대보스지름	
11	254	225.39	185.70	152		51	1068	1031.50	991.81	965	
12	275	245.34	205.65	173		52	1088	1051.70	1012.01	986	
13	296	265.34	225.65	193		53	1108	1071.90	1032.21	1006	
14	316	285.37	245.68	214		54	1128	1092.10	1052.41	1026	
15	337	305.42	265.73	235		55	1149	1112.30	1072.61	1046	
16	357	325.49	285.80	255		56	1169	1132.50	1092.81	1066	
17	378	345.58	305.89	275		57	1189	1152.71	1113.02	1087	
18	398	365.68	325.99	296		58	1209	1172.91	1133.22	1107	
19	419	385.79	346.10	316		59	1230	1193.11	1153.42	1127	
20	439	405.92	366.23	337		60	1250	1213.31	1173.62	1147	
21	459	426.05	386.36	357		61	1270	1233.52	1193.83	1168	
22	480	446.20	406.51	377		62	1290	1253.72	1214.03	1188	
23	500	466.34	426.65	398		63	1310	1273.92	1234.23	1208	
24	520	486.49	446.80	418		64	1331	1294.13	1254.44	1228	
25	541	506.65	466.96	438		65	1351	1314.34	1274.65	1249	
26	561	526.81	487.12	459		66	1371	1334.54	1294.85	1269	
27	581	546.98	507.29	479		67	1391	1354.75	1315.06	1289	
28	602	567.14	527.45	499		68	1412	1374.95	1335.26	1309	
29	622	587.32	547.63	520		69	1432	1395.16	1355.47	1329	
30	642	607.49	567.80	540		70	1452	1415.36	1375.67	1350	
31	663	627.67	587.98	560		71	1472	1435.57	1395.88	1370	
32	683	647.85	608.16	580		72	1493	1455.78	1416.09	1390	
33	703	668.03	628.34	601		73	1513	1475.98	1436.29	1410	
34	723	688.21	648.52	621		74	1533	1496.19	1456.50	1431	
35	744	708.39	668.70	641		75	1553	1516.39	1476.70	1451	
36	764	728.58	688.89	662		76	1573	1536.60	1496.91	1471	
37	784	748.77	709.08	682		77	1594	1556.81	1517.12	1491	
38	804	768.96	729.27	702		78	1614	1577.02	1537.33	1511	
39	825	789.15	749.46	722		79	1634	1597.22	1557.53	1532	
40	845	809.34	769.65	743		80	1654	1617.43	1577.74	1552	
41	865	829.53	789.84	763		81	1674	1637.64	1597.95	1572	
42	885	849.73	810.04	783		82	1695	1657.85	1618.16	1592	
43	906	869.92	830.23	803		83	1715	1678.06	1638.37	1613	
44	926	890.11	850.42	824		84	1735	1698.26	1658.57	1633	
45	946	910.31	870.62	844		85	1755	1718.47	1678.78	1653	
46	966	930.50	890.81	864		86	1776	1738.67	1698.98	1673	
47	987	950.70	911.01	884		87	1796	1758.89	1719.20	1693	
48	1007	970.90	931.21	905		88	1816	1779.09	1739.40	1714	
49	1027	991.10	951.41	925		89	1836	1799.30	1759.61	1734	
50	1047	1011.30	971.61	945		90	1853	1819.51	1779.82	1754	

Note) 1. The indicated maximum axis diameter is for general cases. Please use general mechanical design knowledge when determining the value. You should also check the key surface pressure in the same manner. 2. The sprockets in colored portions of above table are already tooth line hardened.

주) 1. 최대축경은 일반적인 경우를 나타내고 있기 때문에 결정시에는 일반기계설계의 상식으로 결정해 주십시오. 단 키의 면압에 관해서도 같은 식으로 체크 바랍니다. 2. 위 표의 착색부분은 이미 치선경화(硬化)가 되어 있습니다.

DBC 240



unit : mm

No. of Teeth N	Outside Dia D _o	Pitch Dia D _P	Bottom Dia D _B	Hub Dia D _H	Material	No. of Teeth N	Outside Dia D _o	Pitch Dia D _P	Bottom Dia D _B	Hub Dia D _H	Material
잇수	외경	피치원지름	이뿌리원지름	최대보스지름	재질	잇수	외경	피치원지름	이뿌리원지름	최대보스지름	재질
11	305	270.47	222.84	183		51	1281	1237.80	1190.17	1158	
12	330	294.41	246.78	207		52	1305	1262.04	1214.41	1183	
13	355	318.41	270.78	232		53	1330	1286.28	1238.65	1207	
14	380	342.44	394.81	257		54	1354	1310.52	1262.89	1231	
15	404	366.50	318.87	282		55	1378	1334.76	1287.13	1256	
16	429	390.59	342.96	306		56	1430	1359.00	1311.37	1280	
17	453	414.70	367.07	331		57	1427	1383.25	1335.62	1304	
18	478	438.82	391.19	355		58	1451	1407.49	1359.86	1328	
19	502	462.95	415.32	380		59	1475	1431.74	1384.11	1353	
20	527	487.11	439.48	404		60	1500	1455.98	1408.35	1377	
21	551	511.26	463.63	429		61	1524	1480.22	1432.59	1401	
22	576	535.43	487.80	453		62	1548	1504.47	1456.84	1426	
23	600	559.61	511.98	477		63	1573	1528.71	1481.08	1450	
24	625	583.79	536.16	502		64	1597	1552.96	1505.33	1474	
25	649	607.98	560.35	526		65	1621	1577.20	1529.57	1498	
26	673	632.17	584.54	551		66	1645	1601.45	1553.82	1523	
27	698	656.37	608.74	575		67	1670	1625.70	1578.07	1542	
28	722	680.57	632.94	599		68	1694	1649.94	1602.31	1571	
29	746	704.78	657.15	624		69	1718	1674.19	1626.56	1595	
30	771	728.99	681.36	648		70	1742	1698.44	1650.81	1620	
31	795	753.20	705.57	672		71	1767	1722.68	1675.05	1644	
32	819	777.42	729.79	697		72	1791	1746.93	1699.30	1668	
33	844	801.63	754.00	721		73	1815	1771.18	1723.55	1693	
34	868	825.86	778.23	745		74	1840	1795.42	1747.79	1717	
35	892	850.07	802.44	770		75	1864	1819.67	1772.04	1741	
36	917	874.30	826.67	794		76	1888	1843.92	1796.29	1765	
37	941	898.52	850.89	818		77	1912	1868.17	1820.54	1790	
38	965	922.75	875.12	843		78	1937	1892.42	1844.79	1814	
39	990	946.98	899.35	867		79	1961	1916.67	1869.04	1838	
40	1014	971.21	923.58	891		80	1985	1940.91	1893.28	1862	
41	1038	995.44	947.81	916		81	2009	1965.17	1917.54	1887	
42	1063	1019.67	972.04	940		82	2034	1989.41	1941.78	1911	
43	1087	1043.90	996.27	964		83	2058	2013.67	1966.04	1935	
44	1111	1068.13	1020.50	988		84	2082	2037.67	1990.29	1960	
45	1135	1092.37	1044.74	1013		85	2106	2062.16	2014.53	1984	
46	1160	1116.60	1068.97	1037		86	2131	2086.41	2038.78	2008	
47	1184	1140.84	1093.21	1061		87	2155	2110.66	2063.03	2032	
48	1208	1165.08	1117.45	1086		88	2179	2134.91	2087.28	2057	
49	1233	1189.32	1141.69	1110		89	2204	2159.17	2111.54	2081	
50	1257	1213.56	1165.93	1134		90	2228	2183.41	2135.78	2105	

Note) 1. The indicated maximum axis diameter is for general cases. Please use general mechanical design knowledge when determining the value. You should also check the key surface pressure in the same manner. 2. The sprockets in colored portions of above table are already tooth line hardened.

주) 1. 최대축경은 일반적인 경우를 나타내고 있기 때문에 결정시에는 일반기계설계의 상식으로 결정해 주십시오. 단 키의 면압에 관해서도 같은 식으로 체크 바랍니다. 2. 위 표의 착색부분은 이미 치선경화(硬化)가 되어 있습니다.